

GSS SD *Express!* 2.0

The perfect tool for quickly installing large and numerous files, such as applications and content. *SD Express!* 2.0 makes it easy to install and share files with others.

Benefits

- Quickly install applications, documents, content, and other large files in a fraction of the time it takes with HotSync Manager or by beaming
- Create file sets from files residing on your device or others, and use the desktop application to create file sets with your computer
- Configure devices with preset application preferences, such as wireless network settings.
- Organize your file sets into categories, making it easy to manage large numbers of file sets
- The File Set Info command makes it easy for you to remember what's in a file set.
- Use the Auto Install command to expeditiously, and automatically, install one or more file sets onto multiple devices just by inserting and removing the card

GSS *SD Express!* 2.0 greatly simplifies installation of applications, documents, content and other large files onto one or more devices. In fact, the more devices you need to configure, the more you'll come to appreciate the speed and flexibility of *SD Express!* 2.0.

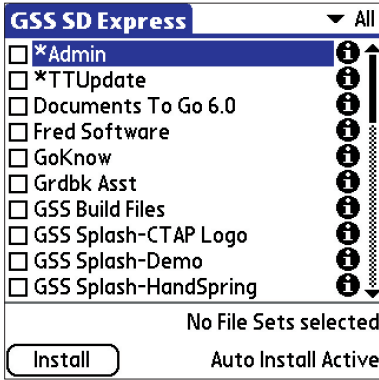
SD Express! 2.0 makes it easy to share files with others, regardless of the number or size of the files. Just package all your files into one or more file sets and use *SD Express!* 2.0 to install the files onto all your devices. It's a great way to share large files, such as multimedia files, with others. Instead of trying to beam a file to a friend, just hand them your *SD Express!* 2.0 card and in a matter of seconds, the files will be installed.

SD Express! 2.0 gives you two methods for creating file sets. You can use the desktop application to create file sets or create them right on your device. Just as you can use *SD Express!* 2.0 to share files with others, you can also capture files residing on other devices. Just insert the card and use *SD Express!* 2.0 to package the files into a file set. The newly created file set is saved to the card so you can install the files onto your device and others. It's the fastest way to share files.

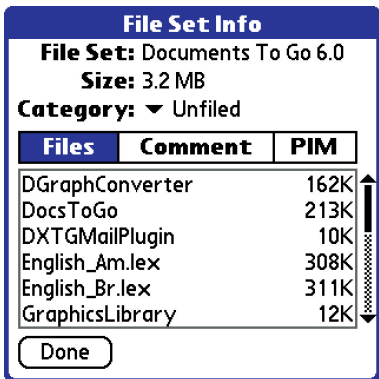
As you build your collection of file sets, *SD Express!* 2.0 lets you organize your file sets into categories, making it much easier to manage large numbers of file sets. In fact, to help manage files when installed onto devices, *SD Express!* 2.0 has an option to create a Palm OS category and assigned the newly installed files to the category. All you have to do is insert the card, select the file sets, and tap Install—*SD Express!* 2.0 does the rest.

To really save time and effort when installing files onto hundreds of devices, whether it's for a conference, training session, or trade show, use Auto Install. This unique feature lets you define one or more file sets to be automatically installed when the card is inserted into a device. This option eliminates any selection and tapping, and automatically launches, installs the file sets, and quits *SD Express!* 2.0. It's a true timesaver when installing files when time is of the essence.

SD Express! 2.0 was designed and conceived for a world where you have little time, want to install lots of files, and need a simple, yet powerful tool.



SD Express! 2.0 lets you select and install multiple file sets and provides realtime status information.



The File Set Info command has been enhanced to provide even greater detail.

Features

Benefits

Install Applications and Files As Needed

Quick and Easy Installation

- With SD Express! 2.0, it's easy to install numerous files, especially large ones, onto multiple devices. Package all your files into one or more file sets and use SD Express! 2.0 to install them onto the devices. It's the fastest way to install files.

Install Multiple File Sets

- To make installation even simpler, SD Express! 2.0 lets you select multiple file sets and install them with a single tap. Just pick the file sets you want to share and tap Install.

Create File Sets on the Device

- SD Express! 2.0 now lets you create file sets right on the device. All you need to do is select the files you want to share and save them as a file set. SD Express! 2.0 makes it even easier to share and install applications and files.

Share File Sets

- Need to share files with others, just select the files on your device, create a file set, and give them your card. Or, if you need their files, just give them your card and have them create the file set for you.

PIM Data

- Need to install Date Book, To Do List or Memo Pad entries on all the handhelds? Using SD Express! 2.0 makes it a snap, just like installing files.

Create Palm Categories

- SD Express! 2.0 has a special option to create Palm OS categories. When you install a file set onto a device, the file set's name is used to create a Palm category and the applications are automatically assigned to it.

Easy-to-Use

File Set Info

- The File Set Info command has been enhanced to let you see the files making up the file set, as well as the Comment and PIM information.

Categorize File Sets

- SD Express! 2.0 makes it easy to organize and store all your handheld applications and files on the card. As you grow to depend upon SD Express! 2.0 and carry around all your files as file sets, you can organize file sets into categories, making it even easier to use SD Express! 2.0.

Features

Benefits

Speedy and Flexible

Multiple file sets

- Be ready for any situation with *SD Express! 2.0*. Just organize your files into one or more file sets, save them to the card and be ready for any crisis. Just insert the card into the device, select one or more file sets, and tap Install. Whether it's a missing application or an application you want to share with others, *SD Express! 2.0* will let you quickly install the files in little to no time.

Auto Install

- Quickly installing files onto numerous devices is easy with Auto Install. Just insert the card and *SD Express! 2.0* will automatically install the selected file sets. No tapping required—it's that simple.

As the need arises, you can temporarily suspend Auto Install by holding down the Scroll Up key as you insert the card into the device.

Scalable

SD card based

- Use one SD card to install your file sets onto an unlimited number of Palms.
- Use several cards to increase productivity, so you and your colleagues can speedily install file sets onto hundreds of devices.

Create one or more master file sets and pre-install them on all your *SD Express! 2.0* cards, making it easy for you and your colleagues to maintain devices..

Intuitive Desktop Application

Creating File Sets

- The *SD Express! 2.0* desktop application makes it easy to create and manage your file sets.

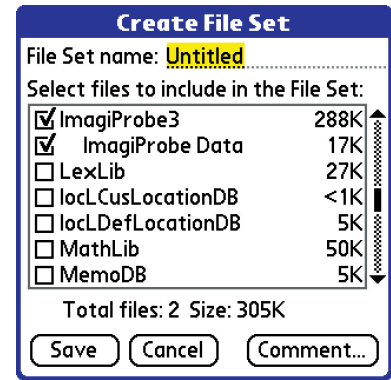
Plus, you can create file sets from files residing on your device or another device, making it very easy to share files with each other.

Sharing File Sets

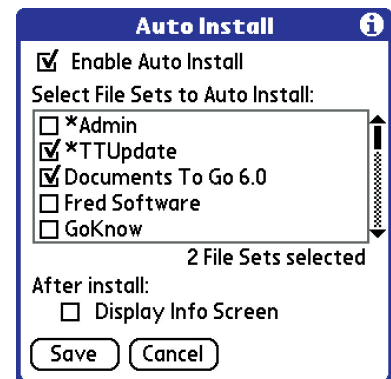
- You can also save your file sets to the local hard disk. That way, you can create a master file set and email it to others, place it on a file server sharpoint, or post it to a website.

Supports SD card readers

- If you use an SD card reader, the desktop application saves the file set file directly to the card. There's no need to use HotSync.



Create file sets right on your handheld, making it even easier to share large files with others—just create a file set and hand them the *SD Express! 2.0* card.



The Auto Install command lets you select and install multiple file sets, just by inserting the card into a device.

