



GSS SD *Deploy!* 2.0

Configure handheld devices quickly and easily—whether you have 10, 100, or 1000s of Palm OS devices. Think of SD *Deploy!* as Ghost® for your Palm OS handheld.

Benefits

- Quickly configure handhelds by cloning a single device to many. It's significantly faster than using HotSync Manager to configure each device one-at-a-time.
- Cloned handhelds are exactly like the master device, including device preferences and application settings.
- With a single SD *Deploy!* 2.0 card, it's easy to clone 30 handhelds in less than 30 minutes. Use several cards to configure several devices at once.
- Use the Auto Deploy command to rapidly clone handhelds. Auto Deploy eliminates all tapping, just insert and remove the card from each device. There's also a Countdown Timer to delay deployment for up to 30 seconds.
- Keep track of an image using the Image Details command—examine files in the image, determine the number of devices cloned and enter anecdotal information as you clone devices.

GSS SD *Deploy!* 2.0 is often referred to as Ghost® for your Palm OS handheld and rightly so. SD *Deploy!* 2.0 allows you to clone a single handheld to multiple handhelds, using the SD *Deploy!* 2.0 expansion card to move the image from device to device.

Just configure a single handheld as a master device by installing all the applications and data you want have on all your devices. Don't forget to configure device settings or preferences, since SD *Deploy!* 2.0 includes them in the image file. Once you've configured the master device with all the information you want, use SD *Deploy!* 2.0's Build command to copy all the information from the device to the expansion card. It's that simple to create an image of the device.

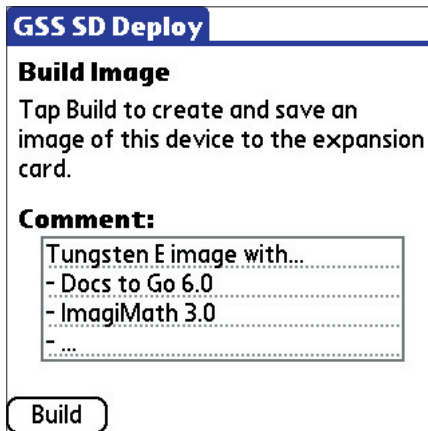
Now that you have the master device's image stored on the expansion card, all you need to do is insert the expansion card into another device. Launch SD *Deploy!* 2.0, select your deployment options and tap Deploy. SD *Deploy!* 2.0 will erase the device and install the master device's image, making the device a clone of the master device—it's that easy.

You'll find that SD *Deploy!* 2.0 is the fastest way to clone devices. It usually takes 30-45 seconds to clone 8-10MB of data. SD *Deploy!* 2.0 is a tremendous timesaver and will save you time every time you need to configure devices.

SD *Deploy!* 2.0 provides several deployment options such as preserving the HotSync name of the device, erasing the HotSync name or using the HotSync name in the image. You can also choose to use GSS BeamTime (included with SD *Deploy!* 2.0) to set the date and time of the device during the cloning process, and launch the Palm OS Welcome application once the cloning process is completed. More importantly, you can change the options on-the-fly as you clone devices.

If you need to deploy hundreds of devices, you find the Auto Deploy command indispensable. It automates the cloning process by eliminating the need to tap buttons. Use the Auto Deploy command to enable Auto Deploy, remove the expansion card from the device and insert it into another device. SD *Deploy!* 2.0 automatically launches, erases the device, deploys the image, and prompts you to remove the card. What could be faster!

So if you need to configure devices, you need SD *Deploy!* 2.0—it's the fastest and easiest way to clone devices.



Creating an image of a master device is easy with SD Deploy! 2.0. Just configure the master device, insert the SD Deploy! 2.0 expansion card, and tap the Build button.



Cloning devices is simple with SD Deploy! 2.0. Just insert the SD Deploy! 2.0 expansion card into a device, select your deployment options and tap the Deploy button.

Features

Benefits

Easy-to-use interface

Simple interface

- SD Deploy! 2.0 employs a simple and easy-to-use user interface based upon the notions of building an image and deploying the image to one or more devices.

Build Mode

- Build mode, as the name implies, is where you create an image of the master device. Just configure the master device with the applications and data so it's exactly the way you want it to be. Insert the SD Deploy! 2.0 expansion card into the master device and tap Build. SD Deploy! 2.0 will copy all the data from the master device to the expansion card, creating an image of the device.

Deploy Mode

- Deploy mode is where you clone devices using the image created from the master device. Just insert the SD Deploy! 2.0 expansion card into a device and tap Deploy. SD Deploy! 2.0 will erase the device and mirror the image to the device so it's just like the master device. This includes application settings and device preferences. It usually takes about 30-45 seconds to mirror an 8-10MB image.

Flexible deployment options

HotSync Name options

- SD Deploy! 2.0 allows you to erase the HotSync name on the device so the device doesn't have a HotSync name or you can choose to preserve the device's HotSync name. You also have the option to use the HotSync name embedded in the image.

Reset Digitizer

- Reset Digitizer instructs SD Deploy! 2.0 to launch the Palm Welcome application once the cloning process is completed. This allows the recipient of the device to set the date and time, and configure the handwriting digitizer.

Set clock with GSS BeamTime

- GSS BeamTime is included with SD Deploy! 2.0 and lets you set the date and time of the handheld during the cloning process. Once SD Deploy! 2.0 has installed the image onto the device, it will prompt you to beam the time to the device using GSS BeamTime.

Features

Benefits

Fast and efficient

Auto Deploy

- Use Auto Deploy to quickly and efficiently configure numerous devices. Auto Deploy automates the process of cloning devices. Just insert the *SD Deploy! 2.0* expansion card into the device and *SD Deploy! 2.0* automatically launches, mirrors the image to the device and prompts you to remove the card. It's simple and the fastest way to clone devices.

Delay Deployment option

- *SD Deploy! 2.0* also offers the option to delay deployment for 10 or 30 seconds, giving you ample time to manage several expansion cards for largescale deployments.

Track deployment and usage

Image details

- *SD Deploy! 2.0* allows you to view the contents of the image file using the Image Detail comand. You can view the files in the image with the File option, use the Info option to get statistical information such as OS version, number of deployments, date created, and use the Comment option to enter anecdotal information.

Scalable

Secure Digital technology

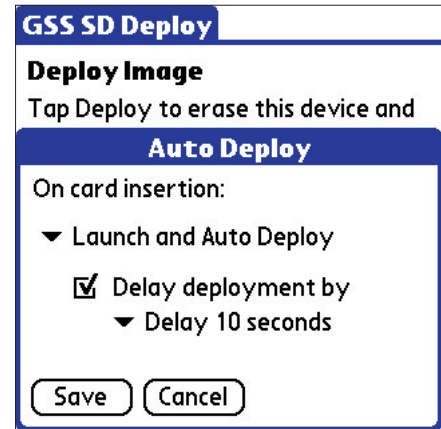
- *SD Deploy! 2.0* comes pre-installed on a Secure Digital expansion card, meaning the product is self-contained and ready-to-use, allowing for use across multiple devices.

Portability

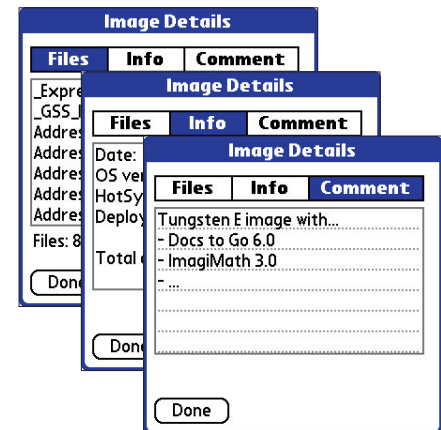
- The *SD Deploy! 2.0* expansion card makes it easy to configure devices, just move the card from device-to-device. Plus, since *SD Deploy! 2.0* is card-based, it's easy carry the card with you and us it as the need arises.

Scalability

- Faced with the challenge of configuring hundreds or thousands of devices, then consider using multiple *SD Deploy! 2.0* expansion cards. With multiple cards, you can configure several devices concurrently, dramatically reducing the time to clone devices.



The Auto Deploy command automates the cloning process so all you need to do is insert and remove the card—it's the fastest way to clone devices.



Use the Image Details command to inspect files in the image, track deployments and provide anecdotal information to help you manage the cloning of devices.



GSS SD *Deploy!* 2.0

Configure handheld devices quickly and easily—whether you have 10, 100, or 1000s of Palm OS devices. Think of SD *Deploy!* as Ghost® for your Palm OS handheld.

Recommendations

SD *Deploy!* 2.0 give you greater flexibility when cloning large numbers of devices. To be most effective, provide cards to each person responsible for configuring devices.

Need to install applications and files onto handhelds without erasing and cloning the devices, then take a look at SD *Express!* 2.0. It's the most powerful tool for installing files onto devices.

Ordering Information

GSS SD *Deploy!* 2.0 – Retail \$499 SRP
Order number: CSDD1002

GSS SD *Deploy!* 2.0 – Education \$249 EDU
Order number: SDD1002

Contents

- GSS SD *Deploy!* 2.0 application
- GSS SD *Deploy!* 2.0 32MB SD card
- GSS BeamTime application
- Documentation
- E-mail support for 90 days from date of purchase. (Charges may apply for support beyond 90 days.)

System Requirements

GSS SD *Deploy!* 2.0

- Palm OS 4.0 or greater.
- Any Palm OS-based device with a Secure Digital expansion slot.
- Master device and destination devices should be same make and model.

GSS BeamTime

- Palm OS 5.0 or greater.
- GSS BeamTime device and destination devices need to have an IR port.

Need More Information?

For more information about SD *Deploy!* 2.0 and other Grant Street Software products, please visit our website at www.grantstreetsoftware.com, send us an e-mail at sales@grantstreetsoftware.com, or call toll free 1-866-787-4778.